

Association of  
**Maternal & Child**  
Health Programs


**2007**  
AMCHP  
Annual Conference

Growing Healthy Communities: Supporting  
Development of Community-level Early Childhood  
Systems

Gretchen Hageman

## Early Childhood Iowa

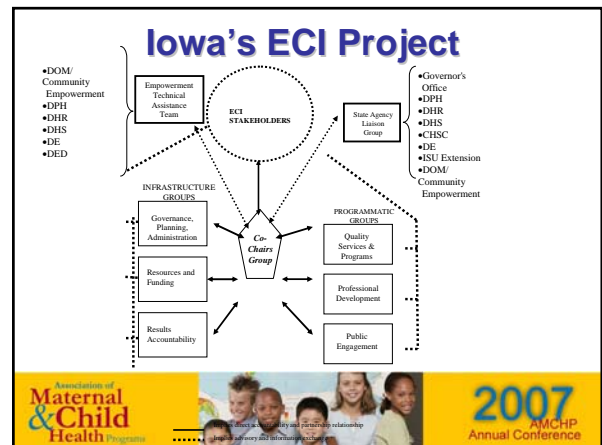
- Promote implementation of strategies to address the critical components in Iowa's Early Care, Health, and Education System Strategic Plan
- Continue to strengthen leadership and collaboration to build the infrastructure for Iowa's Early Care, Health, and Education System
- Further develop results accountability for Iowa's Early Care, Health, and Education System to support data-informed decision making
- Create a commitment for broadening public will and investing resources for Iowa's Early Care, Health, and Education System



## Iowa's Early Care, Health, and Education Vision

**“Every child, beginning at birth, will be healthy and successful.”**


- Adopted by state agencies and organizations
- Gained buy-in and support of Early Childhood Iowa Stakeholders

## Early Childhood Iowa

**PURPOSE:**

Be a catalyst in the development of Iowa's comprehensive, integrated Early Care, Health, and Education System.




## Early Childhood Iowa

**Guiding Principles**

Make Early Childhood Iowa Stakeholders accountable to their mission of building a comprehensive Early Care, Health, and Education System for the State of Iowa.

- *Broad Based Representation*
- *Respect*
- *Responsiveness*
- *Informed Decision Making*
- *Agent of Change*



## Components Workgroups of the System

### Program

- Quality Services and Programs
- Professional and Workforce Development
- Public Engagement

### Infrastructure

- Accountability for Results
- Resources and Funding
- Governance, Planning, and Administration



## Strategic Plan Result Areas

- Healthy Children
- Children Ready to Succeed in School
- Safe and Supportive Communities
- Secure And Nurturing Families
- Secure and Nurturing Early Care and Education Environments



## Early Childhood Iowa

[www.earlychildhoodiowa.org](http://www.earlychildhoodiowa.org)



## Community Empowerment

*“Empowerment was founded on the vision that communities and state government could work together to improve the well being of families with young children.”*

--- Dr. Robert Koob, Iowa Empowerment Board CI  
December, 2000



## Purpose of Community Empowerment

- Build an early care, health and education system: State and communities work together
- Improve the efficiency and effectiveness of early care, education, health and human services programs
- Promote collaboration among state and local levels



## Purpose of Community Empowerment

- Empower local citizens to lead collaborative efforts
- Improve results for families with young children, birth through age 5



## Iowa Empowerment Board

### Composition:

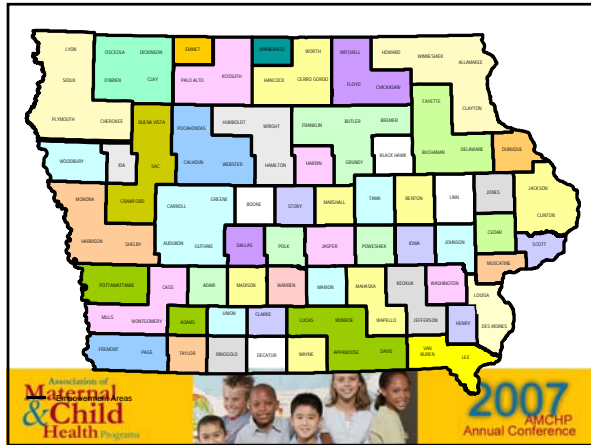
- Citizen members (16)
- State Department Directors
  - ✓ Economic Development
  - ✓ Education
  - ✓ Human Rights
  - ✓ Human Services
  - ✓ Public Health
  - ✓ Workforce Development
- Legislators (6) – Ex Officio



## Iowa Empowerment Board

### Mission:

The Iowa Empowerment Board supports communities by demonstrating and facilitating leadership and collaboration to achieve desired results for children (0-5) and their families.



## Community Empowerment Areas

- 58 areas representing all 99 counties
- Geographically self-defined
- Develop and implement comprehensive, community plans
- Commit to reaching results for young children and their families



## Community Empowerment Boards

- Overview/Role:
  - Promote and demonstrate community collaboration
  - Develop and implement community plan
    - Community assessment
    - Coordinate planning
    - Establish priorities
    - Annually report on the effectiveness of the plan
  - Develop a system for comprehensive services to support families and children, 0 – 5 years of age
  - Coordinate program/funding to meet needs and priorities



## Community Empowerment Boards

### Composition:

- Majority Citizen/Elected Official
- Representation Includes:
  - Business
  - Consumer
  - Faith
  - Education
  - Health
  - Human services





### School Ready

- State Funds
- Support comprehensive services for children ages zero through five, including:
  - Family Support for children Prenatal thru age 3; home visitation component
  - Parent Support & Education (60%)
  - Preschool Support for Low-Income Families
  - Professional development
  - Quality Improvements
  - Other Early Care, Health and Education Services
    - Preschool and child care services
  - Administrative funds (Up to 3%)

### Early Childhood Funds

- Federal Funds
- Enhance quality child care capacity in support of parent capability to obtain or retain employment, including:
  - Regular child care, including recruitment of providers
  - Child care for mildly ill children
  - Second or third shift child care
  - Infant child care
  - Training to increase quality for center-based and home-based child care providers

### Contact information

**Gretchen Hageman**  
**ECCS Project Director**  
**Dept of Public Health**  
**[ghageman@idph.state.ia.us](mailto:ghageman@idph.state.ia.us)**